



GIVE YOUR FAMILY & FRIENDS THE PERFECT GIFT

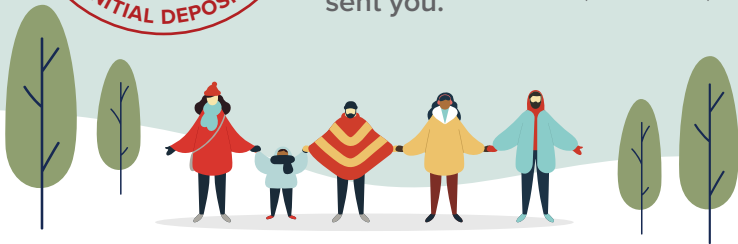
DECEMBER 1 – 31



I'm a member of AMOCO and you should be too! Here's \$5 to get you started.

Let them know

_____ (current member)
sent you.



Present this certificate at account opening or enter promo code: FFDEC when applying for membership online at www.amocofcu.org/membership.

AMOCO
FEDERAL CREDIT UNION
"A Member Owned Cooperative Organization"

all about you™

Subject to membership eligibility. See back for more information. This offer is valid for one new membership when opened December 1 – December 31, 2018. One certificate per new membership.



More than 1 million people are eligible to join AMOCO

Become a member and an owner of our credit union and enjoy favorable rates on loans and deposits. You will also have access to more than 55,000 surcharge-free ATMs through our no monthly service fee checking account. Use this gift certificate to establish your membership and open your first account.

Family Membership

You're eligible to join AMOCO if a member of your immediate family or household is a current member of our credit union. Family members include: your spouse, child, sibling, parent, grandparents, grandchildren, step and adoptive relationships.

Friends and Coworkers

AMOCO serves more than 500 employers, associations, and organizations throughout Galveston, Brazoria, and Harris counties. You're eligible to join if: you work for, pay homeowner association dues to, worship at, volunteer for, or belong to one of the groups we serve. A complete list can be found on our website at www.AMOCOfcu.org/selectpartners.

